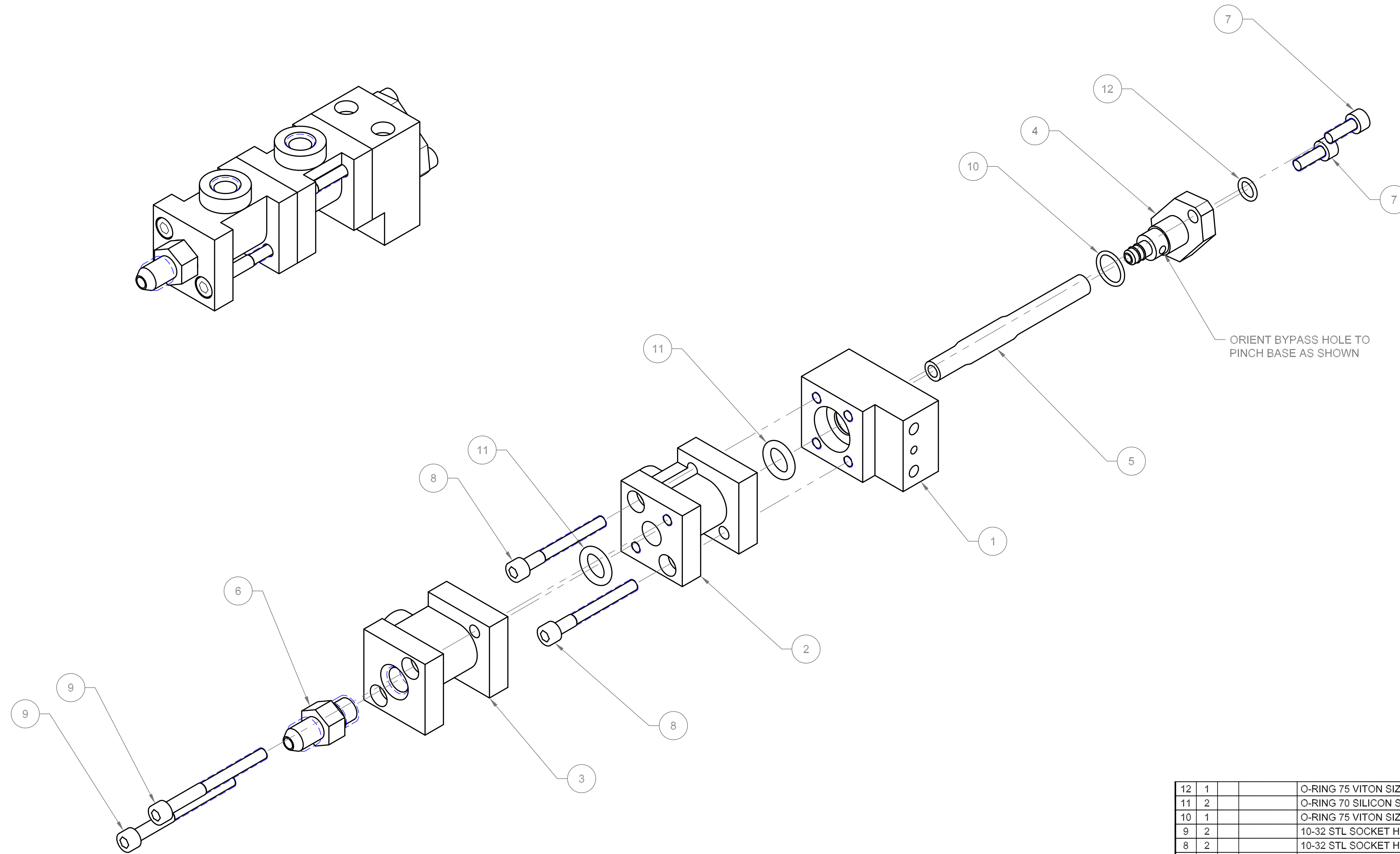
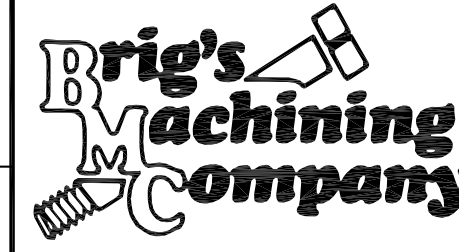


**IMPORTANT**  
 THIS DRAWING OR SPECIFICATION CONSTITUTES THE CONFIDENTIAL INFORMATION OF BRIG'S MACHINING CO. AND ITS RECEIPT OR POSSESSION DOES NOT CONVEY ANY RIGHT IN OR LICENSE TO USE IT OR THE INFORMATION DISCLOSED HEREIN NOR ANY RIGHT TO REPRODUCE THIS DRAWING OR SPECIFICATION NOR ANY PART HEREOF WITHOUT THE WRITTEN CONSENT OF BRIG'S MACHINING CO.

REVISIONS			
ZONE	REV	DESCRIPTION	DATE



ITEM	QTY	DWG	PARTY OR	NOMENCLATURE	MATERIAL
REGD	SIZE	IDENTIFYING NO.	OR DESCRIPTION	SPECIFICATION	
12	1			O-RING 75 VITON SIZE 010	
11	2			O-RING 70 SILICON SIZE 204	
10	1			O-RING 75 VITON SIZE 013	
9	2			10-32 STL SOCKET HEAD CAP SCREW x 2"	
8	2			10-32 STL SOCKET HEAD CAP SCREW x 1-5/8"	
7	2			10-32 ST STL SOCKET HEAD CAP SCREW x 1/2"	
6	1	BP1013		STAINLESS 1/4 AN ORING FITTING	
5	1	B	171D-106	PINCH TUBE	
4	1	B	171D-179	PINCH FITTING	
3	1	B	171D-104	PINCH BYPASS	
2	1	B	171D-103	PINCH CHAMBER	
1	1	B	171D-102	PINCH BASE	

UNLESS OTHERWISE SPECIFIED DIMENSIONS ARE IN INCHES TOLERANCES ARE: FRACTIONS    DECIMALS    ANGLES ±                .XX ±                ±			<b>BRIGS MACHINING COMPANY.</b> LAGUNA HILLS, CA	
MATERIAL FINISH			<b>POWDER PINCH VALVE ASSY</b>	
NEXT ASSY	USED ON	DRAWN BY	SIZE	FSCM NO.
APPLICATION	DO NOT SCALE DRAWING	CHECKED BY	DWG NO.	REV
			D	1
			SCALE 1/1	SHEET 1 of 1

171D-004
APPLICATION
DO NOT SCALE DRAWING