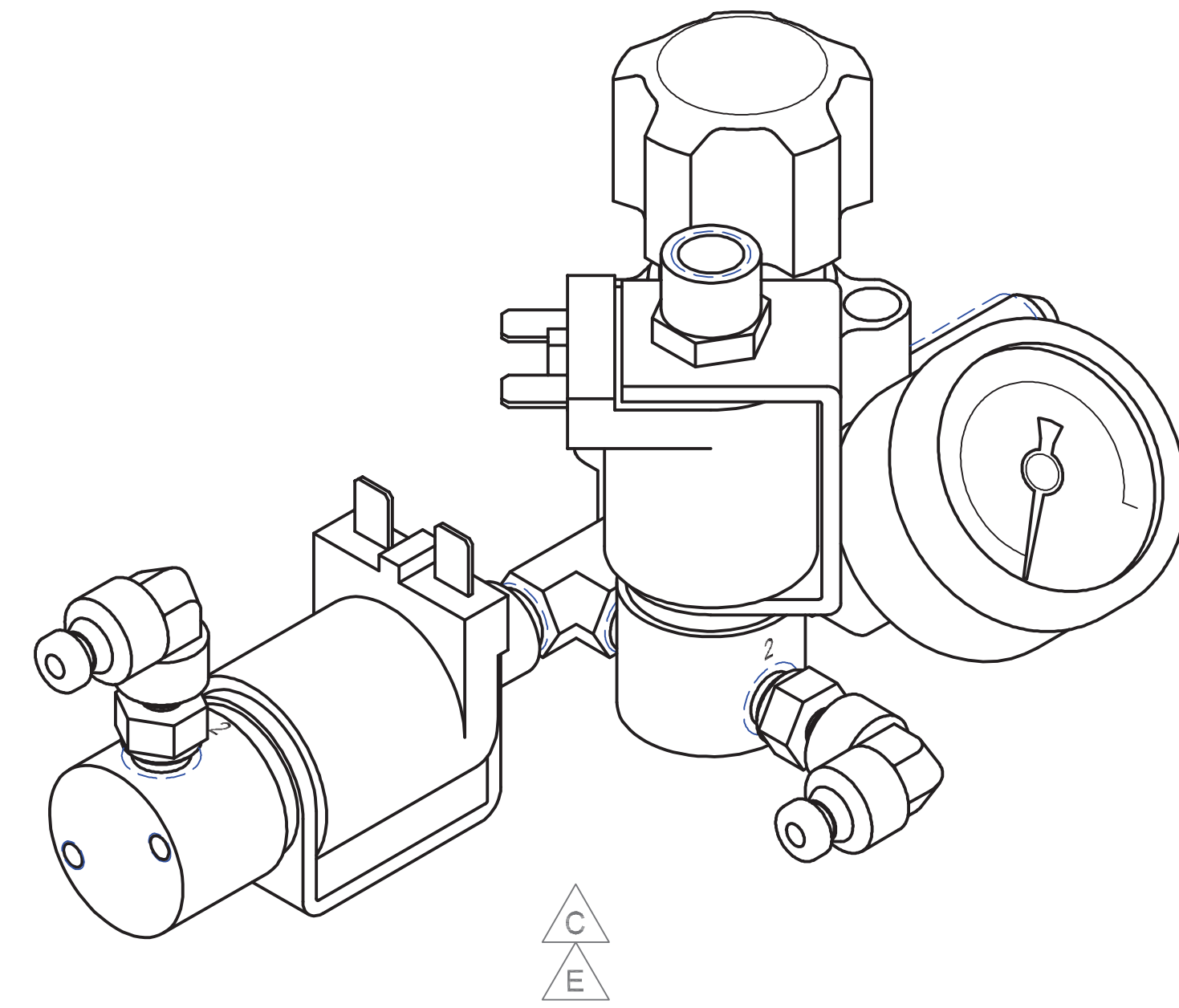
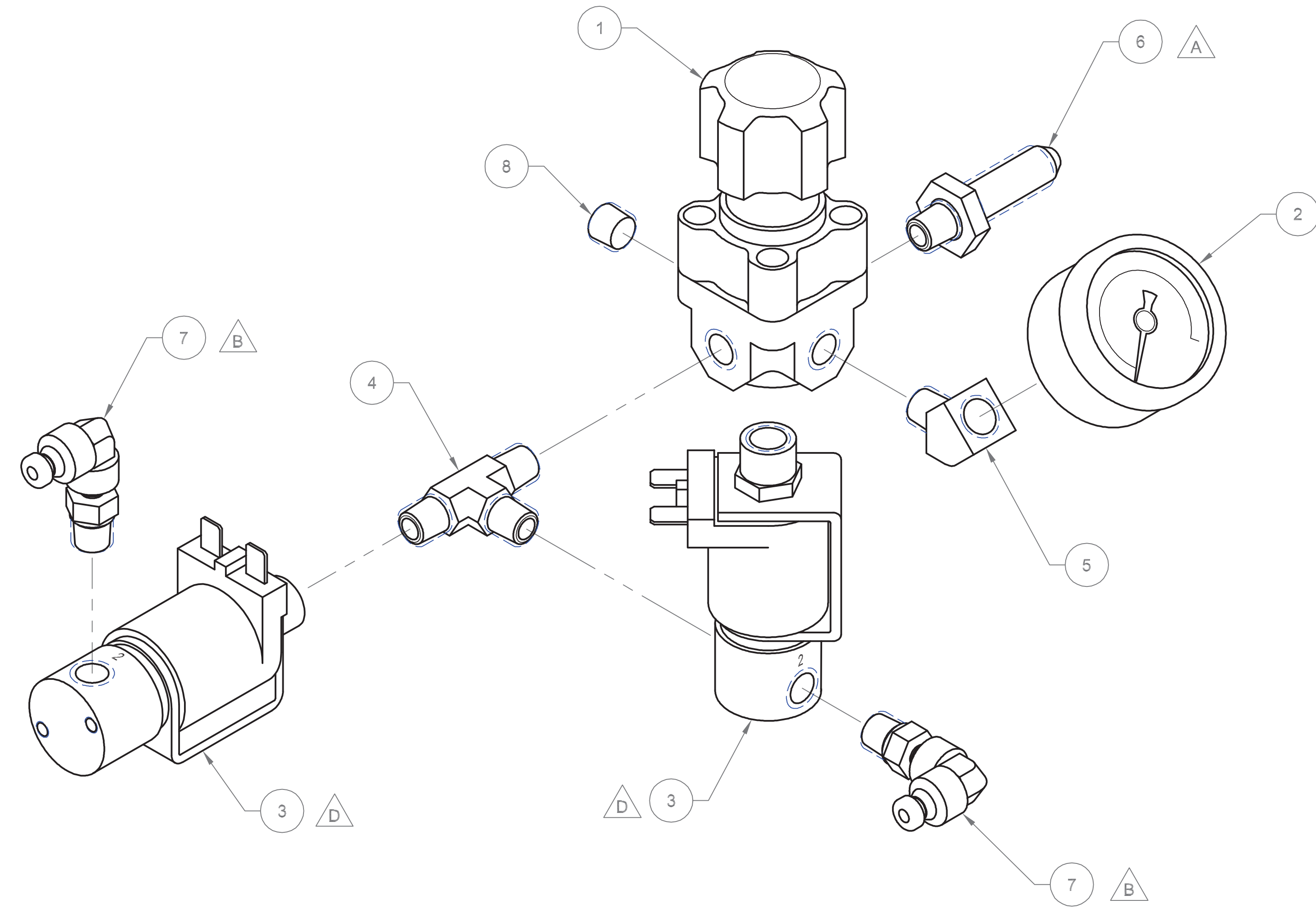


IMPORTANT
 THIS DRAWING OR SPECIFICATION CONSTITUTES THE CONFIDENTIAL INFORMATION OF BRIG'S MACHINING CO. AND ITS RECEIPT OR POSSESSION DOES NOT CONVEY ANY RIGHT IN OR LICENSE TO USE IT OR THE INFORMATION DISCLOSED HEREIN NOR ANY RIGHT TO REPRODUCE THIS DRAWING OR SPECIFICATION NOR ANY PART HEREOF WITHOUT THE WRITTEN CONSENT OF BRIG'S MACHINING CO.

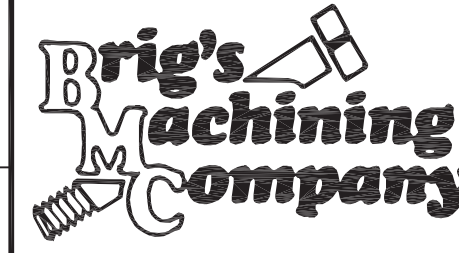
REVISIONS				
ZONE	REV	DESCRIPTION	DATE	APPROVED



NOTES:

- A SCREW ITEM 6 INTO PORT LABELED "SUP" OR "N" OF ITEM 1
- B SCREW ITEM 7 INTO PORT LABELED "2" OF ITEM 3
- C USE TEFLON PIPE TAPE ON ALL PIPE THREADS
- D UNSCREW SOLENOID COIL AND ORIENT WIRE LEADS AS SHOWN
- E ORIENT ALL PARTS AS SHOWN TO WITHIN 5°

ITEM	QTY	DWG	PART	NOMENCLATURE	MATERIAL
REQD	SIZE	IDENTIFYING NO.	OR DESCRIPTION	SPECIFICATION	
8	1			1/8" NPT HEX SOCKET PLUG (COMES WITH ITEM 1)	
7	2	BP1019		1/8" TUBE TO 1/8" NPT 90° SWIVEL FITTING	
6	1	BP1027		1/8" NPT 1/4" AN PANEL FITTING	
5	1	BP1026		1/8" NPT MALE TO FEMALE 45° BRASS FITTING	
4	1	BP1025		1/8" x 1/8" x 1/8" NPT STL T FITTING	
3	2	BP1078		3/64" x 3/64" ORIFICE 120V 2 WAY SOLENOID 1/8" NPT	
2	1	BP1022		0-160 PSI 1/8" MALE NPT PRESSURE GAUGE	
1	1	BP1021		8-125 PSI 1/8" NPT REGULATOR	

UNLESS OTHERWISE SPECIFIED DIMENSIONS ARE IN INCHES TOLERANCES ARE:				BRIGS MACHINING COMPANY. LAGUNA HILLS, CA	
FRACTIONS	DECIMALS			PINCH SOLENOID ASSY	
+	.XX ±	DRAWN BY		SIZE	REV
	.XXX ±	CHECKED BY		D	2
MATERIAL		APPLICATION		SCALE	SHEET
FINISH		DO NOT SCALE DRAWING		1/1	1 of 1
NEXT ASSY		USED ON		DIVC NO. 171D-006	