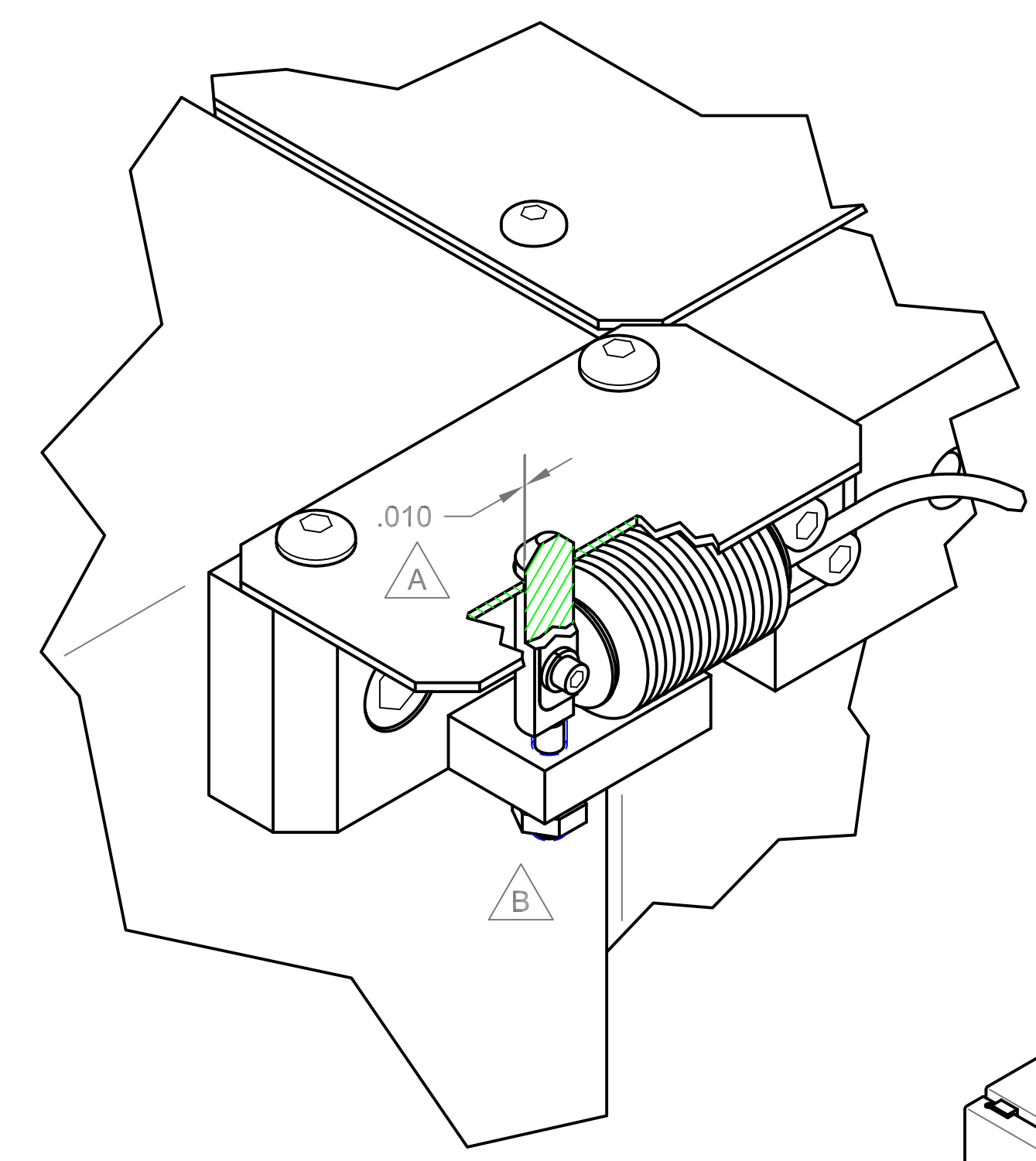
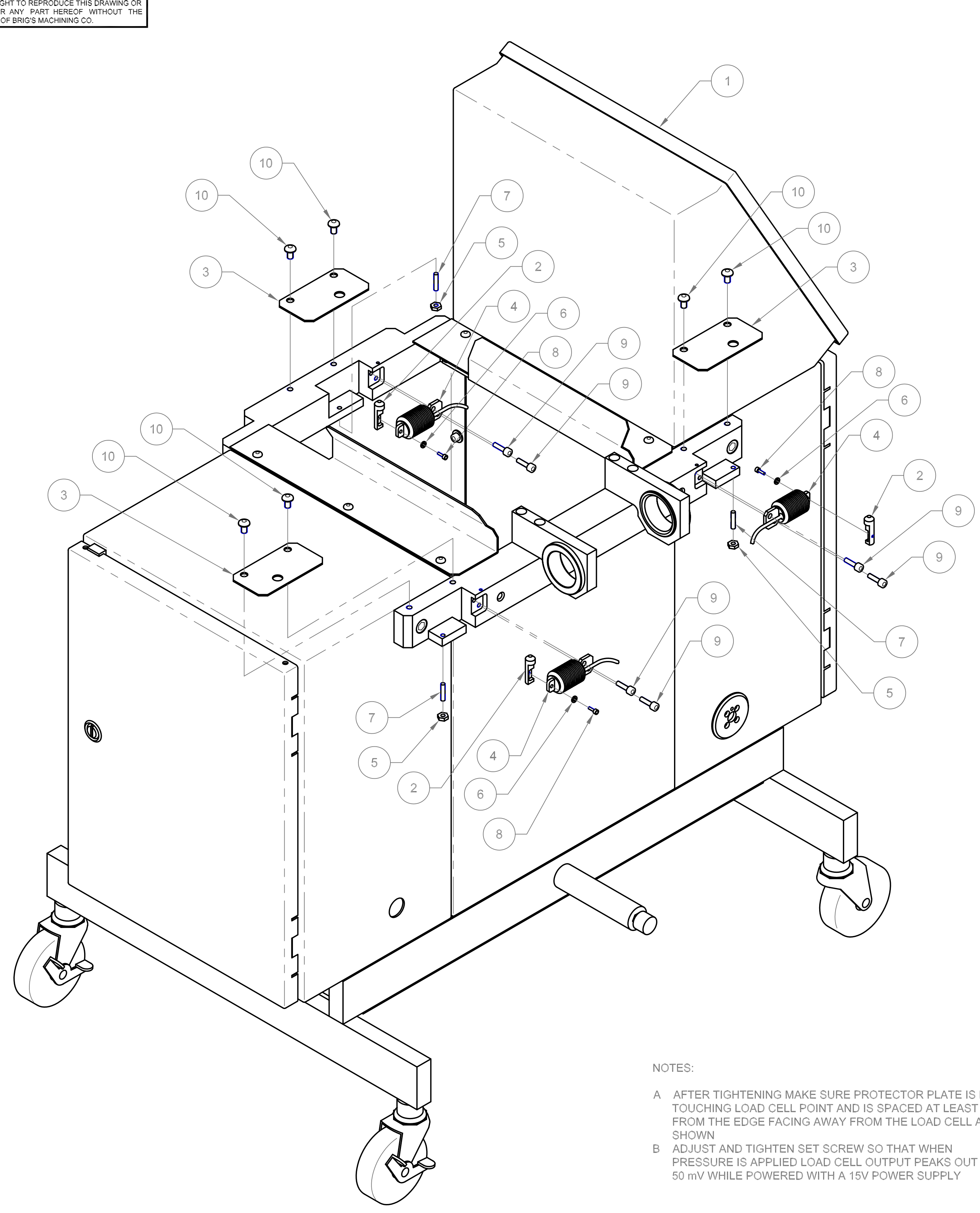
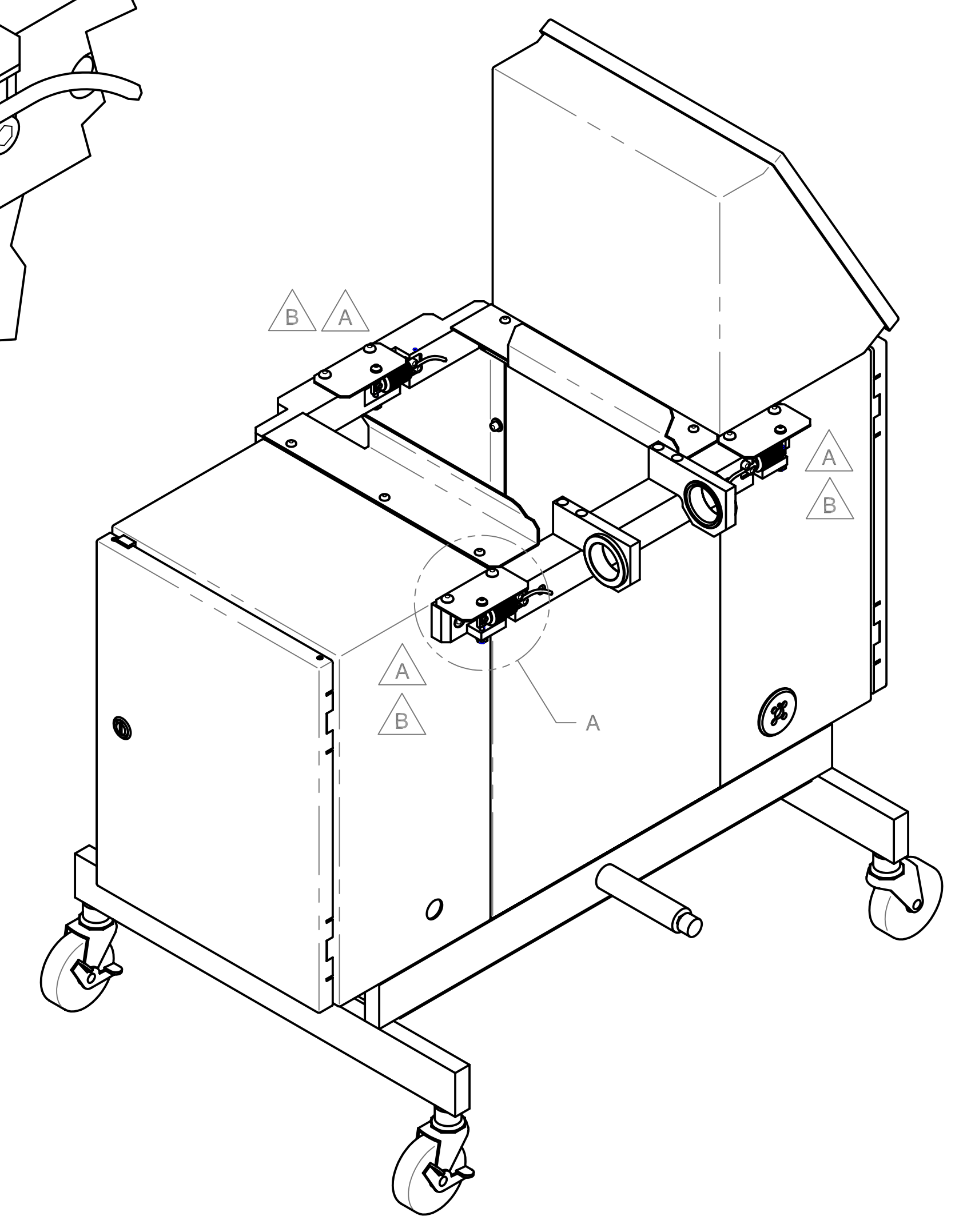


**IMPORTANT**  
 THIS DRAWING OR SPECIFICATION CONSTITUTES THE CONFIDENTIAL INFORMATION OF BRIG'S MACHINING CO. AND ITS RECEIPT OR POSSESSION DOES NOT CONVEY ANY RIGHT IN OR LICENSE TO USE IT OR THE INFORMATION DISCLOSED HEREIN NOR ANY RIGHT TO REPRODUCE THIS DRAWING OR SPECIFICATION NOR ANY PART HEREOF WITHOUT THE WRITTEN CONSENT OF BRIG'S MACHINING CO.

REVISIONS				
ZONE	REV	DESCRIPTION	DATE	APPROVED



DETAIL A



NOTES:  
 A AFTER TIGHTENING MAKE SURE PROTECTOR PLATE IS NOT TOUCHING LOAD CELL POINT AND IS SPACED AT LEAST .010" FROM THE EDGE FACING AWAY FROM THE LOAD CELL AS SHOWN  
 B ADJUST AND TIGHTEN SET SCREW SO THAT WHEN PRESSURE IS APPLIED LOAD CELL OUTPUT PEAKS OUT AT 50 mV WHILE POWERED WITH A 15V POWER SUPPLY

ITEM	QTY	DWG	PART	NOMENCLATURE	MATERIAL
REQD	SIZE	OR	IDENTIFYING NO.	OR DESCRIPTION	SPECIFICATION
10	6			1/4-20 STL BUTTON HEAD CAP SCREW x 3/8"	
9	6			10-32 ST STL SOCKET HEAD CAP SCREW x 5/8"	
8	3			4-40 STL SOCKET HEAD CAP SCREW x 5/16"	
7	3			10-32 ST SET SCREW x 3/4"	
6	3			SIZE 4 LOCK WASHER	
5	3			10-32 FINISH NUT	
4	3		BP1057	150N MAX 3mV/V LOAD CELL	
3	3	A	171D-167	PROTECTOR PLATE	
2	3	B	171D-107	LOAD CELL POINT	
1	1	D	171D-010	SYSTEM ASSY	

UNLESS OTHERWISE SPECIFIED DIMENSIONS ARE IN INCHES TOLERANCES ARE: FRACTIONS DECIMALS ANGLES ± .XX ± ±			<b>BRIGS MACHINING COMPANY.</b> LAGUNA HILLS, CA	
MATERIAL FINISH			<b>LOAD CELL ASSY</b>	
171D-001		DRAWN BY CHECKED BY	SIZE FSCM NO. DWG NO. REV <b>D</b> 171D-011 1	APPLICATION DO NOT SCALE DRAWING SCALE 1/3 SHEET 1 of 1