

**IMPORTANT**  
 THIS DRAWING OR SPECIFICATION CONSTITUTES THE CONFIDENTIAL INFORMATION OF BRIG'S MACHINING CO. AND ITS RECEIPT OR POSSESSION DOES NOT CONVEY ANY RIGHT IN OR LICENSE TO USE IT OR THE INFORMATION DISCLOSED HEREIN NOR ANY RIGHT TO REPRODUCE THIS DRAWING OR SPECIFICATION NOR ANY PART HEREOF WITHOUT THE WRITTEN CONSENT OF BRIG'S MACHINING CO.

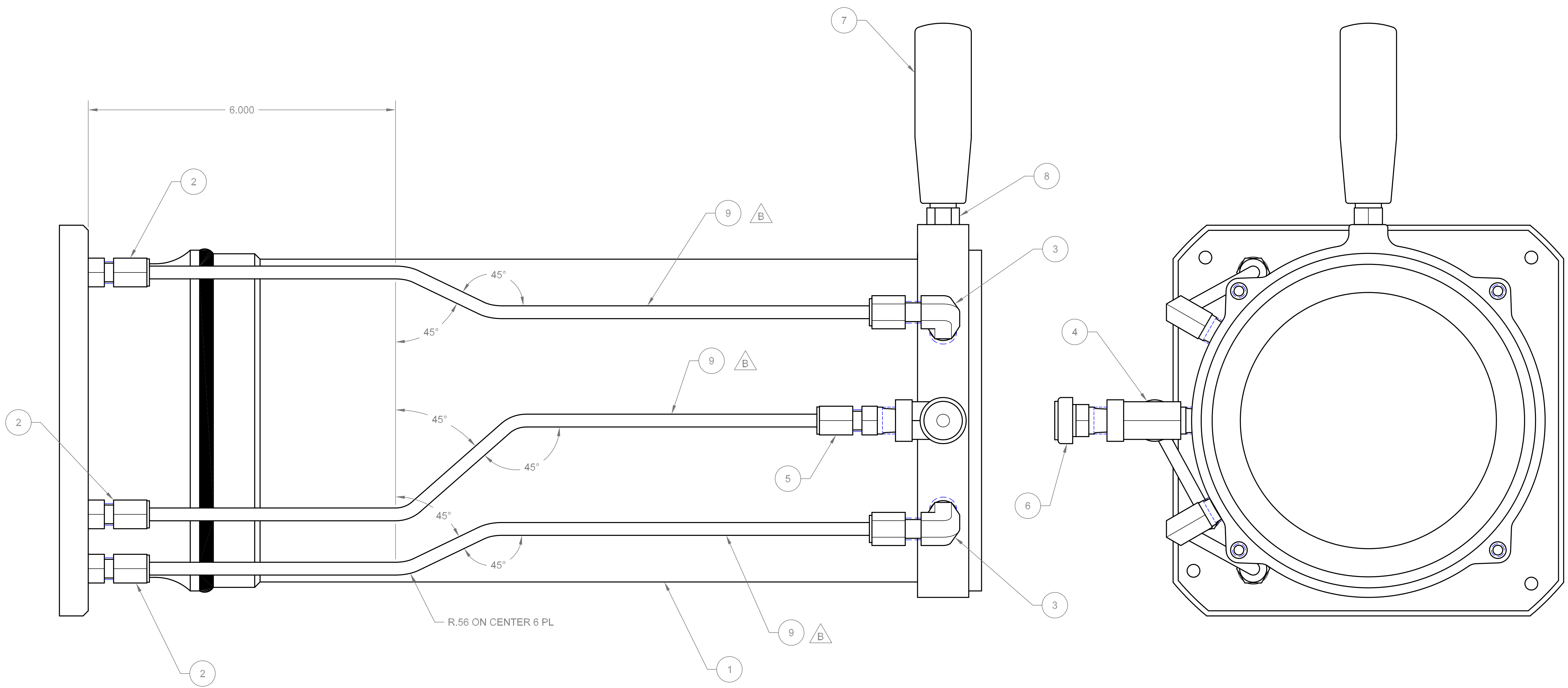
ZONE		REV	DESCRIPTION	DATE	APPROVED

D

C

B

A



D

C

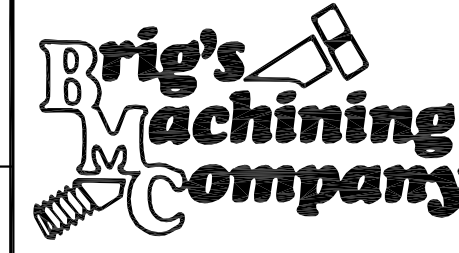
B

A

**NOTES:**

- A USE TEFLON TAPE ON ALL PIPE THREADS
- B DEBUR AND POLISH ALL TUBING ENDS TO A 32 FINISH BEFORE TIGHTENING COMPRESSION FITTINGS

ITEM	QTY	DWG	PARTY OR	NOMENCLATURE	MATERIAL
REQD	SIZE	IDENTIFYING NO.	OR DESCRIPTION	SPECIFICATION	
9	1			Ø1/4" OD Ø5/32" ID STL STL TUBE	
8	1			3/8-16 ST STL FINISH NUT	
7	1	BP1063		3-1/2" PLASTIC SWIVEL HANDLE WITH 3/8-16 STUD	
6	1	BP1062		1/4 NPT 50 PSI PRESURE SAFETY VALVE	
5	1	BP1061		1/4 NPT MALE TO 1/4" COMPRESSION FITTING	
4	1	BP1060		1/4 NPT MALE FEMALE FEMALE STL T FITTING	
3	2	BP1059		1/4 NPT TO 1/4" COMPRESSION 90° STL FITTING	
2	3	BP1058		7/16 ORING TO 1/4" COMPRESSION STL FITTING	
1	1	D	171D-177	CANISTER	

UNLESS OTHERWISE SPECIFIED DIMENSIONS ARE IN INCHES TOLERANCES ARE:			BRIGS MACHINING COMPANY. LAGUNA HILLS, CA	
FRACTIONS	DECIMALS		CANSITER ASSY	
± 1/64	.XX ± .01	FINISH	DRAWN BY	SIZE FSCM NO.
	.XXX ± .005	171D-001	CHECKED BY	DWG NO. 171D-012
NEXT ASSY	USED ON	APPLICATION	DO NOT SCALE DRAWING	SCALE 1/1
				SHEET 1 of 1

8

7

6

5

4

3

2

1